

Sixth Form Prospectus 2024

YSGOL
ABERCONWY



A Brighter Future Begins Today

Ysgol Aberconwy is a school that puts learning and individual achievement at the heart of everything we do. We want every student to succeed; to achieve their full potential, be prepared for the future and become confident, thoughtful young people, so they leave us ready for the challenges of an exciting and increasingly competitive world.

Being a member of the Sixth Form is very different from being a student in Year 11. You will be expected to work hard and we will have high expectations of you both in and out of lessons. You will have to wear a uniform, which has been chosen by the students themselves.

In September 2024, you will have an initial induction programme to prepare you for life in the Sixth Form.

This will introduce you to our specialist facilities and the study techniques needed in the Sixth Form. It will also allow time for making new friends and re-acquainting yourself with old ones. In the Sixth Form class sizes are smaller and you will receive attention that is much more individual.

You will also benefit from a Sixth Form Guidance Mentor to help you reach your full potential. We will closely monitor your progress to ensure that you maximise your abilities and you will be able to take advantage of our purpose-built facilities. These include a refurbished Sixth Form Study Suite and a Common Room, designed to enable you to have a successful and happy time for the next two years.

Don't forget, when you move to Sixth Form, there is an expectation for you to spend additional hours outside of school on your studies to ensure you reach the best possible grade you can. We are here to support you, but remember that success at Sixth Form level requires hard work and dedication from you too!

We want you to stay in education and get the best possible qualifications. We believe our Sixth Form can be the best bridge to university, advanced college courses or employment.

As part of the school, you can also take part in music, drama, academic competitions and sporting activities, as well as joining trips and visits. Positions of responsibility are also available for sixth formers, which look great on university applications and your CV!

We hope you find this information booklet helpful when deciding on your A Level subjects. We have included some useful information for all subjects but to get a detailed breakdown for a particular course, please visit the appropriate syllabus section on the exam board website.

The application form asks for your provisional course interests, which helps with our planning, as we try to tailor a curriculum for individual needs.

Please return your completed application form by the **1st March 2024** to: Ysgol Aberconwy, Morfa Drive, Conwy, LL32 8ED.



Ian Gerrard
Ysgol Aberconwy
Head Teacher



Lesley Sewell
Assistant Head Teacher
(Curriculum)

Video



The options process
explained

YSGOL
ABERCONWY



General Information

Support and Guidance

A team of staff is here to support you: a Head of Sixth Form, a full-time Guidance Mentor and a team of experienced form tutors. Your Guidance Mentor is specifically employed to mentor, support and guide you, whilst also being available as a contact at any point in the school day.

Monitoring and Mentoring

As a member of our Sixth Form, you will be tracked and mentored throughout your courses. You will receive a report every 10 weeks, as well as a dedicated consultation evening. All our students are tracked constantly against challenging targets and we try to ensure that every member of our Sixth Form achieves the very best results they can.

Tutorial

Each student is assigned a Form Tutor who is a daily point of contact. As well as offering study and academic support, your Form Tutor will also undertake a number of mentoring sessions, where you will review and discuss your progress.



"Sixth Form is a great opportunity to better your education and yourself."

Foundation Year

INSPIRE | SUPPORT | SUCCEED

If you have just completed your GCSEs and not quite achieved the C grades you need for your A-Level or BTEC courses, you should still speak to us! Our one-year foundation programme provides a progression route onto our A-Level and vocational Level 3 programmes. In the foundation year you would complete a Vocational Award alongside resits in Maths and English. You may also have the opportunity to complete community work or work experience to build up your skill set, complete a Financial Literacy course or begin one of the Linc courses available across Conwy County. At the end of the foundation year you will be able to decide whether, and be better equipped, to pursue Level 3 qualifications such as A-Levels, enter into an Apprenticeship or continue with Vocational Programmes.

LINC Programme

The LINC programme is a unique opportunity offered by Conwy schools where students can choose to study one subject every Wednesday in one of the schools across the county or at Llandrillo College. Students can select from a wide range of A level and BTEC subjects which are all detailed in the LINC prospectus. This allows students to choose a subject not offered in our own school which is delivered by a specialist in another centre. For example, Engineering can be studied at Llandrillo College, Health and Social Care at Bryn Elan or Performing Arts at Ysgol Aberconwy. Students are transported to the alternative centre by bus and returned to Ysgol Aberconwy in time for the school buses at the end of the day. The LINC programme is well established and all schools work together to ensure students are fully supported. Interim reports and annual reports are provided, assessments are completed and there is a clear mechanism for centres to share information if there are concerns with students attendance, punctuality or ability to complete the course.

YSGOL
ABERCONWY



Facilities

Study time is centred around Yr Hwb, a facility offering ICT resources, workspace and mentoring support. You will also have access to a Sixth Form common room, Y Lolfa, for downtime periods too.

UCAS

The university application process can be a daunting one but we offer excellent support to help you. You will be guided and tracked through the process right up until the point of accepting your final place. We also have links with many of the major universities. As well as visits to Sixth Form from the universities, we ensure that all students have the opportunity to visit a university during their time in the Sixth Form. We also provide support with the process of accessing Student Finance.

Destinations

We are very proud of all our students and the success they achieve. As well as success in employment and apprenticeships, the majority of our students progress to degree level. Students have recently been successful in degree courses in subjects such as Economics, Law, Drama, Languages, Theoretical Physics and Biomedicine in Universities such as Edinburgh, Manchester, Liverpool, Bath, Birmingham and Cardiff.

"Sixth Form is hard work but there is good support if you need it."

YSGOL
ABERCONWY



Sixth Form Key Contacts:



Janette Hughes
Head of Sixth Form



Heather Yale
Sixth Form Mentor

Key Events in Sixth Form

Year 11

Spring Term

Sixth Form Options
process begins

Summer Term

GCSE Examinations

GCSE Results & Sixth
Form Interview
confirmation

Autumn Term

Mock Exams

Spring Term

AS Level Coursework
Mock Exams

Summer Term

AS Level Examinations

Year 12

Autumn Term

University applications
process begins
Mock Exams

Spring Term

A Level Examinations
University applications
process concludes
Mock Exams

Summer Term

A Level Examinations
Sixth Form Ball
Sixth Form Results Day!

Year 13

We offer courses in the following subjects:

- Core Advanced Skills Baccalaureate Wales (Core Subject)
- Ancient History
- Art & Design
- Biology
- Business
- Chemistry
- English Language & Literature
- Film Studies
- Geography
- Government & Politics
- History
- Information Technology
- International Languages: French or German (Linc Course)
- Mathematics
- Further Mathematics (Linc Course)
- Media
- Music (Linc Course)
- Performing Arts (Linc Course)
- Photography (Linc Course)
- Physical Education
- Physics
- Product Design
- Psychology
- Religious Studies
- Sport
- Welsh

Click on the  icon to watch videos or the  to return to this menu



Core Advanced Skills Baccalaureate Wales

Course: [Level 3 Advanced Skills Baccalaureate Wales \(WJEC\)](#)

Course Contact: Pam Williams



The Advanced Skills Baccalaureate Wales (AdvSBW) qualification is an exciting new Level 3 qualification that supports students to become effective, responsible and active citizens, equipping them with the skills for future study or to enter the job market. The qualification has primarily been designed for students aged 16-19, and can be taken alongside other Level 3 qualifications, including A levels.

What you will study:

The two-year course is made up of 3 projects: Global Community Project, Future Destination Project, and Individual Project. Students will take part in a variety of exciting activities and contexts which will be based on the United Nations sustainable development agenda and Wales's Well-being Goals as defined by the Well-being of Future Generations Act (Wales).

The skills you will develop are:

- Literacy
- Numeracy
- Digital Competence
- Creativity and Innovation
- Planning and Organisation
- Critical Thinking and Problem Solving

These will be assessed through the completion of three challenges:

- 1. Individual Project (50%)** - You will plan, manage, and research a topic linked to your future education or career aspirations, and create a written dissertation or an artefact.
- 2. Future Destination Project (25%)** - You will gain an understanding of yourself, explore future employment and wellbeing goals, and plan how you can achieve this.
- 3. Global Community Project (25%)** - You will select a global issue to investigate, share your knowledge with others and take part in a community action.

Assessments can be taken throughout the two-year course with external moderation in January and May. You are likely to complete the Individual Project in the second year

This qualification allows you to develop important skills that you can take forward whether you are moving on to university, training or employment. Developing these skills will help you become an effective, responsible and active citizen and can have a profound effect on your future success and wellbeing.

Ancient History

Course: AS/A Level Ancient History (OCR)

Course Contact: David Jolliffe
 Entry requirements: Grade C in History or English Literature or a 4 in Ancient History
 Assessment: Exam 100%

The course will allow you to develop your understanding of the ancient world and the legacy of the ancient world in today's society. It uses a range of ancient source material, both literary, visual and archaeological to develop your understanding and knowledge of the ancient world. Students develop understanding and knowledge to formulate coherent arguments and judgements about a variety of issues using a range of evidence.

The course focuses on aspects of both Roman and Greek history with a period and an in-depth study for each with no coursework requirement. Both areas explore aspects of the military, political, religious, social and cultural history of their respective cultures.

Assessment:

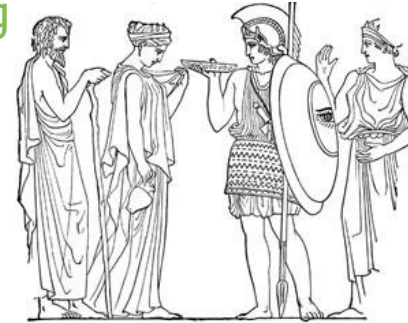
AS Level marks do not go towards the grade if continued at A level, but content is brought forward.

AS Level: Two papers, Greece and Rome, each of 3 questions worth 60 total marks in 1hr 30 mins.

A Level: Two papers, Greece and Rome. Each worth 98 marks and lasting 2 hrs and 30 minutes.

Pathways: Archaeology, Classics, European Studies, History, History of Art, Journalism, Law, Politics, Public Relations, Religious Studies

"An exciting course delving into the history, politics, warfare and social constructs of the ancient world."



What you will study:

- **AS Unit 1** – Greece 492-404BC with a focus on Relations between Greek states and non-Greek states including the challenge from Persia, relations between Sparta and Athens and the Peloponnesian War.
- **AS Unit 2** – The Julio-Claudian Emperors 31BC-AD 68 including the establishment and development of the Roman Principate under the Julio-Claudian Emperors
- **A2 Unit 1** – A depth study on Sparta exploring the education, social and political structures, military culture and it's importance.
- **A2 Unit 2** – The breakdown of the Late Republic 88-31BC develops the role of the Senate and constitutional processes in Rome and the political, social and military developments that lead to the assassination of Julius Caesar and the rise of Octavian to become the first emperor.

Art & Design

Course: AS/A Level Art & Design (WJEC)

Course Contact: Karen Griffith
Entry requirements: GCSE in Art or creative portfolio
Assessment: Coursework 60%
Exam 40% (Practical Assessment)

The Art and Design course offers you a chance to further develop your art, design and graphics skills. Throughout the course, you will develop ideas through observation and understanding the work of other artists, whilst investigating the media tools and techniques used by the artists and applying them to your own work.

You will explore a variety of media, tools and techniques to express your ideas, create numerous compositions based upon research, experimentation and scaling up, alongside digital manipulation of images based on your own work. Great value is placed on independent thinking and you are encouraged to explore, investigate and choose a specific theme of your choice for your final composition. For this you will need to create a large-scale final pieces in mixed and multi-media, which will involve you working in 2D, 3D and digitally.

Pathways: Advertising, Animation, Architecture, Art and Design, Art Director, Art Therapy, Ceramics, Costume Design, Digital Editing, Digital Marketing, Fashion / Textile Design, Film Directing, Video Editing, Fine Art, Florist, Game Design, Graphic Design, Hat Design, Illustration, Jewellery Design, Make-up Artist, Museum / Gallery Curating, Photography, Product Design, Sculptor, Set Design, Shoe Design, Special Effects, Teaching/ Lecturing, Visual Effects Artist, Web Design, Zoological Illustration.

INSPIRE | SUPPORT | SUCCEED

“Find yourself through
the creativity of art”



What you will study:

- **AS Component 1**– Personal Creative Enquiry Portfolio, based on themes or a subject you have chosen.
- **A level component 2**– Personal Investigation, final Composition, based on themes or a subject of your choice.
- **A level component 3**– Externally Set assignment. This unit will be presented to you as an examination paper, where you will have approximately six weeks preparation time and 15 hours to complete a piece of focused study.

Biology

Course: [AS/A Level Biology \(WJEC\)](#)

Course Contact: Simon Wilson / Rachel Moynihan
 Entry requirements: At least a grade B in Biology or grade AB in Double Science
 Assessment: Exam 90%
 Practical Examination 10%

Biology is a versatile A level, suitable for diligent students with an interest in how living organisms interact and function. This is a very popular course, which is extremely challenging and requires a dedicated and highly organised approach, as the level is a significant step up from GCSE Biology.

This course requires you to not only understand the science, but also analyse data and other information to formulate opinions and theories. The scope for biological knowledge has never been wider than it is today, which requires you to have a genuine interest and be prepared to carry out background reading to help develop appropriate subject specific vocabulary and knowledge.

Pathways: Anthropology, Biochemistry, Biology, Chemistry, Dentistry, Dietetics, Environmental Health/ Environmental Science, Geology/ Earth Science, Materials Science, Medicine, Nursing/ Midwifery, Occupational Therapy, Pharmacy/ Pharmacology, Physiotherapy, Psychology, Radiography, Speech and Language Therapy, Sports Science, Veterinary Medicine.



“A very challenging but ultimately rewarding A level.”

What you will study:

- **AS Unit 1** – Basic Biochemistry and Cell Organisation
- **AS Unit 2** – Biodiversity and Physiology of Body Systems
- **A2 Unit 3** – Energy, Homeostasis and the Environment
- **A2 Unit 4** – Variation, Inheritance and Options
- **A2 Unit 5** - Practical Examination

Business

Course: Level 3 Applied Certificate / Extended Certificate in Business (WJEC)

Course Contact: Pam Williams
Entry requirements: Grade C in English GCSE is desirable
Assessment: Coursework 60%
Exam 40%

Business is a subject that will benefit you in whatever career path you choose. Having a good understanding of how businesses and organisations work can benefit you as either an employee or consumer. Studying Business will also help you to understand how different aspects of the law and politics work, making it an excellent subject to study for anyone who wants to keep their future career options open.

Throughout the course you will learn about the different functions and departments within a business and the external influences which can impact a business. You will also understand the wants and needs of customers and how to market your product/ service, so you stand out from competitors. You will be expected to do your own research into different businesses and their activities by reading newspapers and journals to help deepen your understanding of the subject outside lessons.

Visits to businesses and guests from different companies coming into lessons will develop your understanding of the business environment. Business knowledge will open up a world of opportunities for your future.

Pathways: Accountancy, Advertising, Business Studies, Finance, Management, Marketing, Public Relations, Retail Management, Travel & Tourism.

INSPIRE | SUPPORT | SUCCEED

“Developing your knowledge and skills to become effective business owners, leaders, managers, employees and consumers of the future.”



What you will study:

- **Area 1** – Exploring Business Fundamentals
- **Area 2** – Marketing Principles for Business Success
- **Area 3** – Managing Business Finance
- **Area 4** – Managing Human resources
- **Area 5** – Coordinating Efficient Business Operations
- **Area 6** – Developing Skills for Business
- **Area 7** – Managing Ethical Business Operations
- **Area 8** – Sustainable Business

Year 2 will focus primarily on Business Strategy

Chemistry

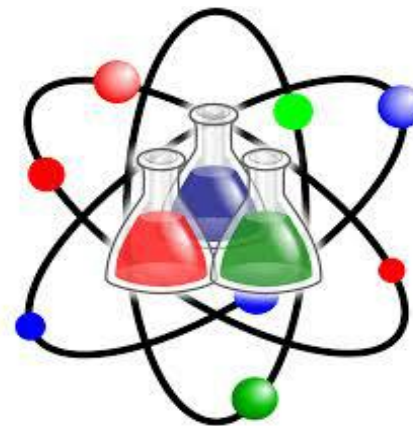
Course: [AS/A Level Chemistry \(WJEC\)](#)

Course Contact: Clare Freeman
 Entry requirements: Grade B in Chemistry or BB in Double Science and grade B GCSE Maths
 Assessment: Exam 90%
 Practical Examination 10%

This course takes your GCSE Chemistry to the next level; it is a highly demanding course, which is well respected in the academic community. The course has a highly practical component but will help you develop good analytical and problem solving skills. This is an exciting course, which is logical, theoretical, and offers an entertaining 21st century view of materials and properties that have shaped our world today.

It will enable you to help solve the problems of the world's industrial and environmental future. To be successful at Chemistry, you must be able to work out which concepts link together and how to link them, which is a high-level skill. For this reason, universities and employers think highly of a Chemistry A Level. If you have a logical mind and enjoy solving problems, this is the course for you.

Pathways: Biochemistry, Biology, Chemical Engineering, Chemistry, Dentistry, Dietetics, Environmental Health, Geology/ Earth Science, Materials Science, Medicine, Pharmacy/ Pharmacology, Physics, Physiotherapy, Psychology, Radiography, Sports Science, Veterinary Medicine



“Chemistry helps to make life’s mysteries a little less mysterious”

What you will study:

- **AS Unit 1** – The Language of Chemistry, Structure of Matter and Simple Reactions
- **AS Unit 2** – Energy, Rate and Chemistry of Carbon Compounds
- **A2 Unit 3** – Physical and Inorganic Chemistry
- **A2 Unit 4** – Organic Chemistry and Analysis
- **A2 Unit 5** – Practical examination

English

Course: AS/A Level English Language & Literature (WJEC)

Course Contact: Jennifer Clayton
Entry requirements: Grade C in English Language or Literature at GCSE
Assessment: Exam 80%
 Coursework 20%

This is a combined English Language and English Literature course so you will develop your interest and enjoyment of English by studying a variety of challenging literary and non-literary texts. Through your reading, you will develop the skills of creativity and critical analysis and will be able to compare a wide range of texts.

You will study the different language levels of phonetics, phonology, prosody, lexis, semantics, grammar, pragmatics and discourse. There is something for everyone and there are numerous opportunities for you to develop your own personal writing style. You will analyse the ways in which meanings are shaped in texts and you will explore connections across texts. You will examine the significance and influence of the contexts in which texts are produced and received and you will demonstrate expertise and creativity in your own writing. The major strength of an English student is the ability to communicate effectively, both orally and in writing.

Pathways: Advertising, Broadcasting, Business, Communication, Education, Entertainment, Film and Television, Government, Translation, Journalism, Law, Marketing, Media, Politics, Public Relations, Publishing, Research, Sales, Social Work, Sociology and Criminology, Speech and Language Therapy, Writer: freelance, technical, author

“Learn the skills that develop intellectual maturity.”



What you will study:

- **Unit 1** – Comparative Analysis and Creative Writing
- **Unit 2** – Drama and Non-literary Text Study
- **Unit 3** – Shakespeare
- **Unit 4** – Unseen Texts and Prose Study
- **Unit 5** – Critical and Creative Genre Study

Film Studies

INSPIRE | SUPPORT | SUCCEED

Course: A Level Film Studies (EDUQAS)

Course Contact: Amy Grimward
Entry requirements: An interest in film is essential
Assessment: Exam 70%
Coursework 30%

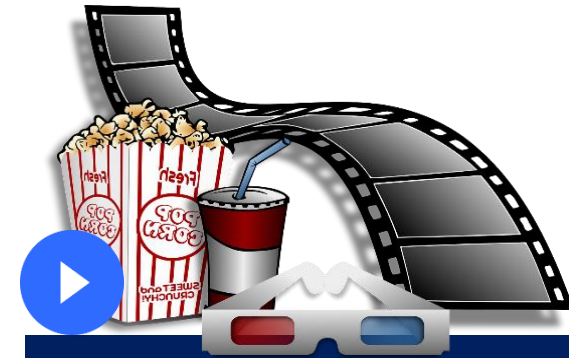
Film Studies is an exciting and engaging A Level course, which offers many opportunities to explore your creativity and ignite your passion for film. The study of film is a respected academic subject and is taught at degree level at universities across the UK. It allows you to develop a critical awareness and understanding of film, examine the cultural impact of film on society, and to develop transferable skills that are key to many intellectual and practical situations.

Over the two years of this course, you will have opportunity to use the school's film and editing equipment to create short films, both individually and as a group. You will also study a wide range of films; some of these will be familiar to you, and some will be more challenging. From Classic and New Hollywood films, such as *Some Like it Hot* and *La La Land*, to experimental films like *Pulp Fiction*, British films such as *This Is England*, American Blockbusters and independent films, documentary and silent films – there will certainly be films that appeal to you in this broad and enriching course.

We are fortunate enough to work with outside agencies who offer highly valuable training opportunities; previous A Level Film students have worked with TAPE to edit, direct and support production of films. We have also visited Aria Studios in Llangefni, where students had a tour of the set of *Rownd a Rownd*, explored the costume, hair and make-up department, and tried their hand at using virtual reality to create immersive film sets.

Pathways: English, Film Studies, Film and Television Production, Media Production, Photography and Film, Practical Filmmaking.

“A modern, exciting and academic course that will develop your understanding of the film industry.”



What you will study:

- Varieties of Film and Filmmaking
- Global Filmmaking Perspectives
- Production

Geography

Course: [AS/A Level Geography \(WJEC\)](#)

Course Contact: James Moran

Entry requirements: A keen interest and curiosity for the world around you. Good literacy and numeracy skills with a minimum C grade in GCSE English.

Assessment: Exam 80%
Coursework 20%

Geography balances the study of the physical environment and human interactions and encourages you to apply geographical knowledge, theory and skills to the world around you. In turn, this will enable you to develop a critical understanding of the world's people, places and environments in the 21st century.

On this course you will be able to develop both knowledge and understanding of contemporary geographical concepts, together with transferable skills, that will enable you to progress to higher education and a range of employment opportunities. The specification draws on both physical and human geography, explores people-environment interactions and encourages development of fieldwork at the local level to enable you to pose enquiry questions.

Fieldwork forms an essential part of the course because it provides both in-depth case study material about specifically selected sites, and a practical experience using investigation techniques. There are two field trips in Year 12, one physical and one human geography.

Pathways: Environmental Science, Geography, Geology/ Earth Science, Surveying, Travel & Tourism

INSPIRE | SUPPORT | SUCCEED

“Developing an appreciation of the physical world around you”



What you will study:

- AS Unit 1 – Tectonics: Earthquakes, Volcanoes and Tsunamis
- AS Unit 2 – Coasts
- AS Unit 3 – Rural/Urban Issues and Management
- A2 Unit 4 – Water and Carbon Cycling
- A2 Unit 5 – Energy and Ecosystems

Government & Politics

Course: AS/A Level Government & Politics (WJEC)

Course Contact: Gavin Roche

Entry requirements: Grade C in English GCSE and preferably a similar subject such as History/ Geography

Assessment: Exam 100%

When you turn 18, you will receive the right to vote. If you have ever thought, “Why? What’s the point? What does it all mean?” then this is the course for you! Maybe you have a desire to change the world, in which case you will need to know how you can make a start and this course will set you off on your journey. You may have a keen interest in politics, contemporary society or law. Alternatively, you may just simply want to know how and why Wales, the UK, the European Union and the USA behave as they do!

This is an eye opening course that will give you a real insight into just why the nation and the world behaves as it does, and that tries to live by the words of the great philosopher Plato, “One of the penalties for refusing to have an interest in politics is to end up being governed by your inferiors.” Through studying this course, you will develop a critical awareness of the nature of politics, understand the structures of authority and power within the political systems across the world and you will learn about differing political ideologies.

Pathways: Economics, History, International Relations, Law, Philosophy, Politics, Sociology

“Insight into why the nation and the world behaves as it does...”



What you will study:

- **AS Unit 1** – Government in Wales and the UK
- **AS Unit 2** – Living and Participating in a Democracy
- **A2 Unit 3** – Political Concepts and Theories
- **A2 Unit 4** – Government and Politics of the USA.

History

Course: AS/A Level History (WJEC)

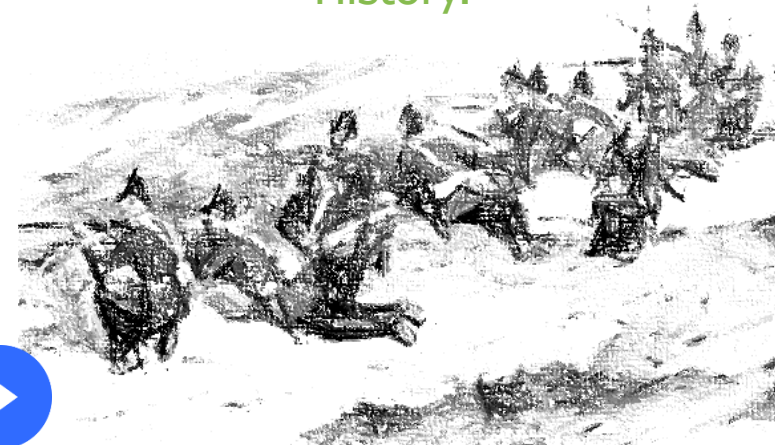
Course Contact: Gavin Roche
 Entry requirements: Grade C in History GCSE
 Assessment: Exam 80%
 Coursework 20%

History is a well-respected academic subject that is viewed favourably not only by universities but also a number of potential future employers. An A level in History provides a suitable foundation for the study of history, or a related area of study like law or politics, at a higher education level and can also prepare you for future employment and the world of work.

It gives you an opportunity to study a period of history before the 19th and 20th centuries, adding breadth to your overall historical understanding. It also enables you to study modern history from an international perspective, which helps you develop a clear understanding of the key issues in the world around you today.

Pathways: Archaeology, Classics, European Studies, History, History of Art, Journalism, Law, Politics, Public Relations, Religious Studies.

"An exciting mix of
British, European
and American
History."



What you will study:

- **AS Unit 1** – Period Study: Europe 1890-1990
- **AS Unit 2** – Depth Study: part 1: Charles 1st and the build up to the English Civil War 1625-1642
- **A2 Unit 3** – Breadth Study: America 1890-1990
- **A2 Unit 4** – Depth Study, part 2: The English Civil Wars, Oliver Cromwell, Regicide and the Restoration 1642-1660

Information Technology

Course: BTEC Level 3 National Extended Certificate in Information Technology (Pearson)

Course Contact: Steve Barnett
Entry requirements: None
Assessment: Coursework 25% (Social Media)
Coursework 17% (Spreadsheet modelling)
Exam 33% (IT systems)
Task based assignment 25% (Database)

Information Technology involves the use of computers in industry, commerce and the arts. Increasingly businesses are implementing IT strategies to manage and process data both to support many business processes and to deliver new opportunities.

This qualification provides you with the opportunity to develop your knowledge and skills in IT systems, systems management and social media in business, which will enable progression to employment or further study in the IT sector or other sectors.

You will develop practical relational database skills in preparation for a controlled assessment. You will also create a 'Social Media' site for a real or made up business of your choice. A spreadsheet modelling task will be completed, currently we are using Disneyland Paris as a theme. Finally the theory unit will look at different aspects of IT systems.

Pathways: Computer Game Development, Computing and IT, Computer Science, Creative Computing, Cyber Security, Electronic Engineering.

“Develop your knowledge, skills and understanding to prepare you for entry into the world of IT!”



What you will study:

- Information Technology Systems
- Creating Systems to Manage Information (Database)
- Social Media
- Data Modelling (Spreadsheets)

International Languages

Course: AS/A Level in [French](#) (WJEC) or [German](#) (Linc Course) (WJEC)

Course Contact: Jamie McAllister
Entry requirements: Grade B in French or German at GCSE
Assessment: Exam 100%

The importance of language skills in the current climate cannot be underestimated. It is readily acknowledged that an international language is proving essential as we continue to build working relationships with Europe and the wider international community. French is spoken as the first language in six countries within Europe and widely spoken in North America, Africa and the Middle East. Over 80 million people in Europe also speak German.

The WJEC AS and A Level in French or German provides an engaging and exciting opportunity for you to build on your previous knowledge of French or German from GCSE. Through social, intellectual and cultural themes, you will be able to develop your linguistic knowledge and cultural understanding of the countries or communities where the language is spoken.

There is also an opportunity to study literature and film, which will allow you to undertake a deeper analysis of language structures and increase your cultural awareness, as part of an integrated approach to learning a language. A strong focus is placed on building your confidence and fluency in spoken French or German using relevant and topical themes.

Pathways: Engineering, Law, Journalism, Business, Tourism, Media, Linguistics, Teaching, Psychology, Criminology, Medicine.

“Deepen your global connection to culture, history and media.”

INSPIRE | SUPPORT | SUCCEED



What you will study:

French

- **AS Theme 1** – Being a Young Person in a French-speaking Society (Social Issues and Trends)
- **AS Theme 2** – Understanding the French-Speaking World (Political, Intellectual and Artistic Culture)
- **A2 Theme 3** – Diversity and Difference (Social Issues and Trends)
- **A2 Theme 4** – France 1940-1950: The Occupation and Post-War Years (Political, Intellectual and Artistic Culture)

German

- **AS Theme 1** – Being a Young Person in a German-Speaking Society (Social Issues and Trends)
- **AS Theme 2** – Understanding the German-Speaking World (Political, Intellectual and Artistic Culture)
- **A2 Theme 3** – Diversity and Difference (Social Issues and Trends)
- **A2 Theme 4** – The Making of Modern Germany: 1989 onwards

Maths

Course: [AS/A Level Mathematics \(WJEC\)](#)

Course Contact: Lesley Sewell / Chris Kitchen

Entry requirements: Grade B in Mathematics or Mathematics - Numeracy at GCSE

Assessment: Exam 100%

Mathematics at A Level is a course worth studying in its own right, and as a supporting subject for the sciences. This course builds on many of the concepts you have already studied at GCSE level. An AS and A Level in Mathematics will provide you with a broad, coherent, satisfying and worthwhile course of study.

It encourages you to develop confidence in, and a positive attitude towards, mathematics and to recognise its importance in your own life and society.

Mathematics encourages you to develop your understanding of mathematics techniques, develops your ability to reason logically, expand on your mathematical skills and understanding of the progression in mathematics, recognise how situations may be represented mathematically and how using mathematics can be an effective means of communication.

It is a sought after qualification, both for courses in higher education and for the workplace.

Pathways: Accounting, Aeronautical Engineering, Architecture, Banking and Finance, Biochemistry, Construction, Business Studies, Computing, Economics, Engineering, Materials Science, Mathematics, Pharmacy, Pharmacology, Physics, Quantity Surveying, Radiography, Surveying.

INSPIRE | SUPPORT | SUCCEED



“An interesting and challenging course, which extends the methods you learnt at GCSE and introduces you to many more advanced concepts which support engineering and science subjects in Higher Education.”



What you will study:

- **AS Unit 1** – Pure Maths A
- **AS Unit 2** – Applied Maths A
- **A2 Unit 3** – Pure Maths B
- **A2 Unit 4** – Applied Maths B

Further Maths (Linc Course)

Course: [AS/A Level Further Mathematics \(WJEC\)](#)

Course Contact: Lesley Sewell / Chris Kitchen

Entry requirements: A/A* in GCSE Maths and studying Maths at A-level

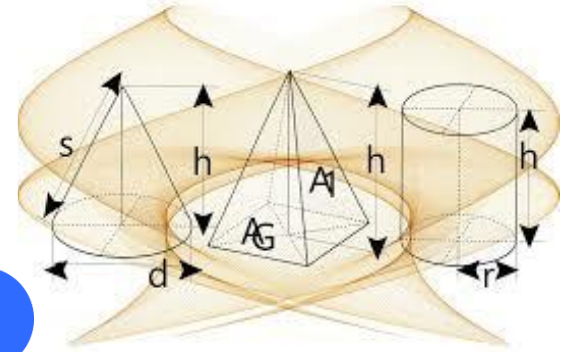
Assessment: Exam 100%

If you are planning to take A level Maths as one of your options, you can also opt to take A level Further Mathematics. A level Further Mathematics broadens your mathematical skills and promotes deeper mathematical thinking. You will be introduced to interesting new areas of pure mathematics such as complex numbers, matrices, vectors and apply mathematics in a wider range of contexts.

This course is challenging and helps take your maths skills even further, which is very useful if you're looking at studying Mathematics, Engineering or Physics at university. Many universities now include Further Maths as a requirement for courses with a strong mathematical emphasis.

Pathways: Aeronautical Engineering, Architecture, Banking and Finance, Biochemistry, Building/Construction, Business Studies, Computing, Economics, Engineering, Materials Science, Mathematics, Pharmacy, Pharmacology, Physics, Project management, Quantity Surveying, Radiography, Surveying.

"An essential stepping stone for anyone interested in studying Mathematics or Engineering in Higher Education."



What you will study:

- **AS Unit 1** – Further Pure Maths
- **AS Unit 2** – Further Statistics
- **AS Unit 3** – Further Mechanics
- **A2 Unit 4** – Further Pure Maths
- **A2 Unit 5** – Further Statistics
- **A2 Unit 6** – Further Mechanics

Media

INSPIRE | SUPPORT | SUCCEED

Course: BTEC Level 3 National Extended Certificate in Creative Digital Media Production (Pearson)

Course Contact: Jen Ohlsson / Richard Burrows / Nikki Wilson
Entry Requirements: Experience of Media BTEC level 1/2 advantageous, but not necessary. A keen interest in the subject is required.
Assessment: Coursework 100%

This exciting and dynamic qualification provides an introduction to the study of creative digital media production. Learners develop an understanding of the media industry through analysing media representations and pitching and producing media projects such as music videos, short film extracts, animation and digital games to name but a few.

You will gain a broad understanding of the subject and learn the skills to produce media artefacts, develop your ability to analyse and deconstruct media images and representations, and learn the communication and planning skills needed to work in teams through vocational media projects.

The scenarios that you are presented with will reflect the demands of the media industry. You will produce products of a professional or near professional standard. You will have the opportunity to work with international media organisations such as IRIS Prize and with local media companies such as TAPE Community and Film.

Pathways: Apprenticeships in areas such as: Production Lighting, Studio Operations, Studio Facilities. Junior roles within the industry such as: Production Runner/Assistant, Broadcast Assistant, Archive Assistant, Assistant to Camera Crew, Junior Researcher, Production Secretary. Careers in areas such as: English Language and Literature, Film and Television Production and Distribution, Journalism, Marketing, Media Development and Production, Media Studies, Public Relations, Publishing.

“Develop your use of digital technology and your creative use of media.”



What you will study:

You will study 3 compulsory units:

- Media Representations
- Pre-production portfolio
- Responding to a commission

You will also study 1 optional unit in an area such as Film production, Radio production and Website production.

Music (Linc Course)

Course: **BTEC Level 3 Subsidiary Diploma in Music - Performing (Pearson)**

Course Contact: Andy Umpleby
Entry requirements: Just a passion for the subject!
Assessment: Coursework 100%

If you enjoy listening to, performing or dabbling in music production techniques then this course is for you. This course is designed to provide you with the skills and knowledge to succeed in music.

Music is a highly regarded discipline in all academic fields. Study of the subject requires a specific skill set, which is not demonstrated in other areas and as such is an asset to applying for any course of higher education, as well as many specific careers in the field. Through continuous assessment, the course focuses on music performance; solo and group performances, as well as working on song composition and recording and examining the music industry in general.

The course also covers skills to support your success in the music industry, units in performance and composition, as well as having to organise and execute a musical event. You need to have a keen interest in making music as a hobby or want to study the subject at a higher level and have high levels of self-discipline to rehearse and refine work for an audience, whilst meeting deadlines.

Pathways: Drama, Music, Music and Business Management, Music and Performing Arts, Music Technology, Music Theatre.



“An exciting practical course that allows you to specialise in music.”



What you will study:

A range of units which you can tailor to your interests.

These can include: Music Performance, Solo Music Performance, Music Events management, Music in the community, Music composition, Sound and Lighting design and many more.

Performing Arts (Linc Course)

Course: BTEC Level 3 National Extended Certificate in Performing Arts (Acting, Musical Theatre or Dance)

Course Contact: Nikki Wilson

Entry requirements: Participation/ engagement in performing arts

Assessment: 100% coursework

This is a practical performing arts course that allows you to specialise in acting, musical theatre or dance and you will have the opportunity of working with a wide range of Arts practitioners and of attending a wide variety of performances.

All students will begin the course with an introductory unit that will develop your understanding and skills in your chosen specialist area. As the course progresses, you will develop in both your performance skills and your understanding of the industry. Whilst the course is 80% practical, there are many opportunities given for research and reflection.

The courses are assessed both internally and externally. However, the external assessment is taken over an extended period and is not in a formal exam setting.

This course will appeal to students who have some performance experience: it's likely that you took Performing Arts at Key Stage 4, performed in school productions or productions outside of school.

Pathways: Drama, Theatre Studies, Film Studies. Degree courses in Drama, Theatre Studies or Film Studies. Entry to Drama/Stage school - for courses in acting or dance - depending on your course route.

“Develop creativity and independence to become effective 21st century theatre makers.”



What you will study:

You will study units depending on your interests and skills, for example you may wish to develop a specific style of dance, specific acting skills or areas of stage management.

All students will study the Developing Skills and Techniques for Performers unit and the Group Performance Workshop

Photography (Linc Course)

Course: [AS/A Level Art & Design: Photography \(WJEC\)](#)

Course Contact: Bethan Russell / Karen Griffith
Entry requirements: A passion for photography
Assessment: Coursework 60%
Exam 40% (Practical Assessment)

The Photography course will enable you to develop your photography and digital editing skills. This course is practical and experimental in approach, and will build on your observation, composition, editing and creative skills in a fully equipped photography studio.

Throughout the course you will develop your own ideas for your photography through understanding the work of other photographers, whilst investigating the tools and techniques used by these photographers and applying them to your own work.

Topics include: History of photography, photographic contextual studies, general photographic theory, digital photography, digital editing, experimental photography, other lens and light-based art. "...Photography is an art of observation. It's about finding something interesting in an ordinary place...it has little to do with the things you see and everything to do with the way you see them." – Elliott Erwitt

Pathways: Advertising, Architectural Photography, Art and Design, Art Director, Art Therapy, Clinical / Medical Photography, Commercial / Industrial Photography, Digital Editing, Digital Marketing, Fashion, Film / Video Editing, Film / Television camera operation, Fine Art Photography, Food Photography, Forensic Photography, Freelance Photography, Graphic Design, Magazine Features Editing, Media Planning, Multimedia Specialist, Museum / Gallery Curating, Photojournalism/ Documentary Photography, Press Photography, Scientific Photography, Sports Photography, Studio / Portrait Photography, Stylist, Visual Effects Artist, Visual Merchandising, Web Content Management, Web Design, Wildlife Photography

INSPIRE | SUPPORT | SUCCEED

"You don't take a photograph,
you make it."
Ansel Adams



What you will study:

- **AS Component 1**– Personal Creative Enquiry Portfolio, based on themes or a subject you have chosen.
- **A Level Component 2**– Personal Investigation, final Composition, based on themes or a subject of your choice.
- **A Level Component 3** – Externally Set assignment. This unit will be presented to you as an examination paper, where you will have approximately six weeks preparation time and 15 hours to complete a piece of focused study.

Physical Education

Course: [WJEC A Level Physical Education](#)

Course Contact: Callum Bennett

Entry requirements: Must Participate in a practical sport from the approved WJEC list of sports, outside of school during their sixth form studies. GCSE PE Min. Grade: B

Assessment: AS: 40% Overall (16% Prac/Coursework; 24% Exam)
A2: 60% Overall (24% Prac/Coursework; 36% Exam)

AS/A level Physical Education is a widely accepted applied science, where the specification has been designed to allow learners to develop an appreciation of physical education in a wide range of contexts and detail.

It is designed to integrate theory and practice with the emphasis on the application of theoretical knowledge that surrounds many areas in sport, health and exercise. There is no course like this at A Level. A Level PE is the combination of Psychology; Sociology; Biomechanics; Skill Acquisition; Anatomy and Physiology and comparative studies.

Pathways: Occupational Therapy, Physiotherapy, Sports Development and Coaching, Sport and Exercise Psychology, Sport and Physical Education, Sports Science; Health Sciences; Psychology; Physics; Performance Analysis;

"Extend your knowledge of the Science that underpins Sport, Health and Exercise"



What you will study:

- Exercise physiology,
- Performance analysis and training
- Sport psychology
- Skill acquisition
- Sport and society

Physics

Course: [AS/A Level Physics \(WJEC\)](#)

Course Contact: Andrew Jacobsen

Entry requirements: Grade B in Physics or grade BB in Double Science at GCSE

Assessment: Exam 90%

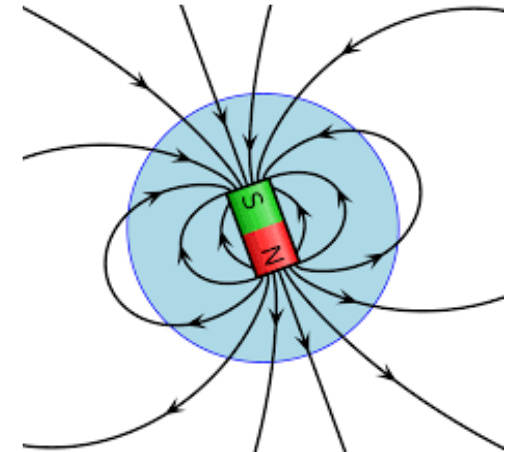
Practical Assessment 10%

Physics is vital in present-day society and lies at the heart of the multitude of science and engineering disciplines. It is an important qualification if you are looking to pursue a career in the physical science, engineering or mathematics.

In addition, the study of physics provides opportunities to develop high-level problem solving skills. It will enhance your understanding of the world and teach you the main concepts about motion, electricity, radiation and the universe. This highly demanding course is both theoretical and practically based and divided into five units for the full A Level course; the first two units provide an AS qualification.

This course would make you extremely valuable to many employers, as it develops a wide range of soft skills vital to any modern workplace, such as learning to work in teams, communication skills and the ability to explain concepts with clarity and focus. While it is possible, it is unadvisable to study Physics without studying A Level Mathematics.

Pathways: Aeronautical Engineering, Architecture, Astro Physics, Automotive Engineering, Biochemistry, Construction, Chemical Engineering, Civil Engineering, Computing, Electronic Engineering, Environmental Health, Geology/ Earth Science, Mechanical Engineering, Medical Physics, Physics, Radiography, Surveying, Weapons Engineering.



"A highly logical,
mathematical and
methodical
science."



What you will study:

- **AS Unit 1** - Motion, Energy and Matter
- **AS Unit 2** - Electricity and Light
- **A2 Unit 3** - Oscillations and Nuclei
- **A2 Unit 4** - Fields and an option choice
- **A2 Unit 5** - Practical

Product Design

Course: [AS/A Level Product Design \(WJEC\)](#)

Course Contact: Tom Dennis
 Entry requirements: Grade C in Product Design at GCSE
 Assessment: Exam 50%
 Coursework 50%

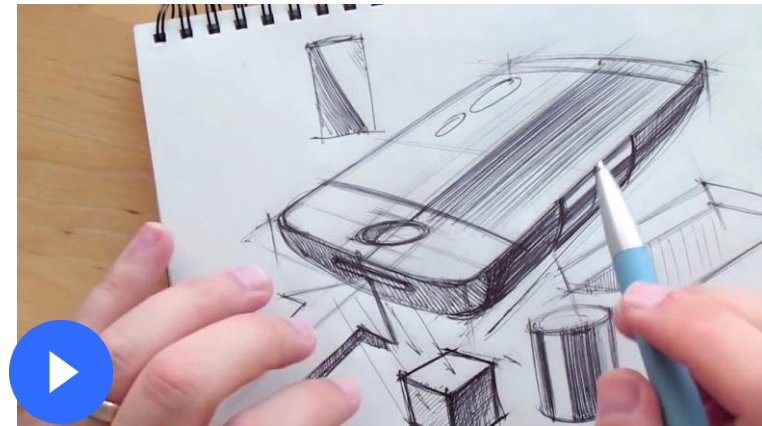
An A level in Product Design gives you the opportunity to develop your capabilities in designing and making products and to appreciate the complex relations between design, materials, manufacturing and marketing.

This course enables you to take a broad view of design and technology and to develop a wide range of skills, including working with others, thinking creatively and making quality products. It requires you to identify a market need or opportunity for a new product, develop, make and test prototypes and evaluate the process.

It is an exciting and engaging course that will suit students who have an interest in how products and applications are designed and made in industry and commercial practices, including the wider issues affecting design decisions. This could be your first step towards a highly satisfying and successful career in design, engineering, manufacturing or the creative industries, which are all predicted to grow strongly.

Pathways: Civil Engineering, Electronic Engineering, Marketing, Materials Engineering and Mechanical Engineering.

“Understanding the whole design aspect and process behind products you use every day!”



What you will study:

- **AS Unit 1** – Materials, Components and Application
- **AS Unit 2** – Learning through Designing and Making
- **A2 Unit 3** – Materials, Components and Application
- **A2 Unit 4** – Learning through Designing and Application

Psychology

Course: Psychology A Level - WJEC

Course Contact: Bethan Hughes

Entry requirements: B in GCSE English Language or English Literature, B in GCSE Mathematics or Numeracy

Assessment: Psychology Past to Present (Exam 20%)
Using Psychological Concepts (Exam 20%)
Implications in the Real World (Exam 40%)
Applied Research Methods (Exam* 20%)

*This exam will include a section based on investigative activities carried out by students prior to the exam.

In your first year of study you will learn about the 5 main psychological approaches and explore classic and well-known studies. You will also be given an introduction to research methods and will begin to engage in debates surrounding psychology and psychological research, such as the ethics of neuroscience and the credibility of eyewitness testimony.

In your second year of study you will begin to understand the real world implications of psychology and study conditions such as schizophrenia and stress alongside controversies within the psychology community. You will also be expected to conduct your own research.

Pathways: Psychology, teaching, social work, management, consultancy, research

INSPIRE | SUPPORT | SUCCEED

“Are you curious about how the human mind works? Do you want to know the science behind human behaviour?”

If the answer to both those questions is ‘yes,’ then you may want to consider studying Psychology.”



What you will study:

- Historical and contemporary psychology experiments and research
- Controversies within psychology
- Mental Illnesses such as Schizophrenia
- Neurodiversity
- How to conduct your own ethical research
- How to analyse data from research

M

Religious Studies

Course: [AS/A Level Religious Studies \(WJEC\)](#)

Course Contact: Sally Salt / Ellie Fox

Entry requirements: Grade C in English and at least short course RE at GCSE

Assessment: Exam 100%

Religious Studies at A level involves the study of Buddhism, philosophy and ethics, which provides an excellent foundation for a broad range of careers; from medicine to public service and from an archivist to a counsellor. Religion is one of the most powerful social and cultural forces in the world and as our world becomes increasingly interdependent, and we interact with groups that are more diverse day to day, the spirit fostered in religious studies is becoming ever more relevant.

This course develops your knowledge and understanding of the world around you, as well as building on the knowledge you gained from studying at GCSE. It encourages you to develop your evaluative and critical thinking skills, as well as your consideration for differing viewpoints. It will also allow you to consider how a broad and deep knowledge of different world faiths and beliefs can help you understand the context of events around the world.

Pathways: English, History, Medicine, Philosophy and Religion, Psychology, Religious Studies, Theology and Ethics.

“Explore and express your own beliefs.”



What you will study:

- **AS Unit 1** – Buddhism – Study of a Religion
- **AS Unit 2** – An Introduction to Religion and Ethics and the Philosophy of Religion
- **A2 Unit 3** – Buddhism – Study of a Religion
- **A2 Unit 4** – Religion and Ethics
- **A2 Unit 5** – Philosophy of Religion

Sport

Course: BTEC Level 3 National Diploma In Sport (Pearson)

Course Contact: Callum Bennett

Entry requirements: GCSE in Physical Education would be a benefit but not essential. Minimum C in GCSE Science (Biology)

Assessment: Exam 45% across 3 external assessments
Coursework: 55% across 6 units of internal assessment

This is intended as an Applied General qualification, equivalent in size to two A Levels. It has been designed as part of a two-year programme to support your progression to higher education. You will Conduct in-depth research of anatomy and physiology, fitness training and programming principles for health and performance purposes and sport as a business and investigate how its business affects the leisure industries. These aspects are examined via external assessments.

You will cover a broad base of study areas, which will help you work towards a career in the sports sector by completing a professional development. With sport being such a vast and crucial industry and market with many different pathways, this course will help you understand the scope and wide range of opportunities available to you. You will learn how the healthy human body works during exercise, how exercise promotes health, the psychology behind sport, and the integral styles of leadership, coaching and officiating in sport. These aspects will all be generally applied to host sporting events for peers and younger.

This course provides you with an exciting opportunity to broaden horizons in one of the largest industries, opening you up to the world of work in sport and other linked areas.

Pathways: Occupational Therapy, Physiotherapy, Sports Development and Coaching, Sport and Exercise Psychology, Sport and Physical Education, Sports Science

INSPIRE | SUPPORT | SUCCEED

"Giving you the head start you need to enter the sports industry."



What you will study:

9 units of which 6 are mandatory and 3 are external

Mandatory (numbers are the weighting, adding up to 720):

Anatomy and Physiology 120

Fitness Training and Programming for Health, Sport and Well-being 120

Professional Development in the Sports Industry 60

Sports Leadership 60

Investigating Business in Sport and the Active Leisure Industry 90

Skill Aq in Sport 90

Optional:

Rules, Regulations and Officiating in Sport 60

Sports Event Organisation 60

Sport Psychology 60

Performance Analysis 60

Coaching for Performance 60

Sports Injury Management 60

Of these, we will choose three based on the general interests and destination plans of the groups following their work on professional development.

Welsh

Course: AS/A Level Welsh Second Language (WJEC)

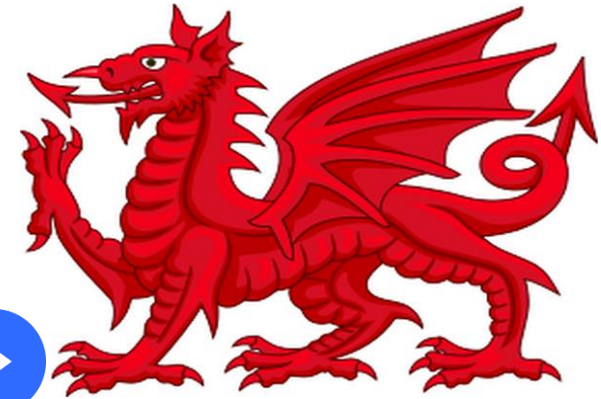
Course Contact: Sioned Williams
 Entry requirements: Grade B in Welsh at GCSE
 Assessment: Exam 50%
 Oracy 40%
 Coursework 10%

The Welsh Second Language course enables you to communicate fluently and confidently in Welsh, write creatively and factually, whilst also furthering your ability to read and respond to others opinions. By succeeding in Welsh, it makes your application for university far more attractive, even if you decide to study another degree apart from Welsh; you will find that having studied a language will be a valuable tool.

It will show how flexible you are and that you have the ability to communicate in a second language. Welsh will also be valuable for the world of work, and as a result of studying Welsh there will be numerous options ahead in Wales, from the jobs within the public sector in Wales, to the local Welsh Government, education and the media to name a few.

Pathways: Business, History, Languages, Nursing, Medicine, Politics, Social Care, Speech and Language Therapy and Welsh

“Keeping the
Welsh language
alive!”



What you will study:

- AS Module 1 – Film and Oracy
- AS Module 2 – Written Coursework
- AS Module 3 – Using Language and Poetry
- A2 Module 4 – Drama and Oracy
- A2 Module 5 – Welsh in the Society and Translanguaging
- A2 Module 6 – Using Language and Short Story