

YSGOL
ABERCONWY



Y GANOLFAN

Hafan - Man Meddwl - Pontio - Tegfan

2020 - 2021

INTRODUCTION

Y Ganolfan is located within the Design & Technology and Art block at Ysgol Aberconwy. It occupies a suite of rooms and offices. It is designed to meet the needs of children with complex social, emotional or behavioural difficulties and currently has five planned areas including Hafan, Y Nyth, Man Meddwl, Pontio, and Pontio distaw. Pupils attending y Ganolfan may have additional learning needs such as cognitive difficulties or autistic spectrum disorder and every child will have their own Education plan and Pupil profile to share with school staff. Pupils demonstrating particularly challenging behaviours have an individual behaviour plan and a graduated response chart developed with parents that prevents any difficult situations from escalating very quickly. Our aim is to ensure that every pupil feels supported and meets or exceeds their full potential. We work hard to raise self-esteem and self-confidence and aim to equip our children with effective personal management skills. Y Ganolfan is a nurturing environment working closely with school staff and designed to support pupils in being able to access mainstream education successfully.

Y Ganolfan operates following the following six principles of nurture:

- 1.Children's learning is understood developmentally
2. The classroom offers a safe base
3. The importance of nurture for the development of self-esteem
4. Language is a vital means of communication
5. All behaviour is communication
6. The importance of transition in children's lives

THE CURRICULUM

We aim to support pupils in being involved and in being a part of the mainstream environment as much as possible. Hafan and Pontio pupils follow a bespoke programme tailored to their individual needs that will include mainstream lessons as well as some sessions offering a more holistic approach to their development. Some bespoke sessions are planned by specialist teachers timetabled to Hafan during the week, and others may involve outside agencies and services. Y Ganolfan coordinator is a qualified counsellor and is able to use her skills to support pupils in this way. Y Ganolfan staff use their 'Elsa', 'Lego therapy' and 'Drawing & Talking' training to support pupils.

REFERRAL TO HAFAN & PONTIO

All Hafan and Pontio pupils will be identified during the transition process in consultation with primary teachers, ALNCo's, external services and parents. A plan will be put in place and reviewed by the October half term once we have had the opportunity to get to know the pupils a little better.

Any new referrals, at any other time, will require completion of the relevant documentation by the pastoral team (Hafan) and teaching staff (Pontio). All referrals will be reviewed in the inclusion meeting that takes place weekly and includes Y Ganolfan coordinator, the ALNCo and the Assistant headteacher responsible for inclusion. The outcomes and discussion from these meetings are fed back to the pastoral and leadership teams.

All pupils referred to Hafan and Pontio will undergo baseline assessments with the ALNCo to ensure that learning needs are identified at an early stage and to dismiss any underlying factors to any behaviour issues. Assessment of progress is ongoing. Progress through the National Curriculum in mainstream lessons is monitored by the ALNCo and Heads of Department and shared with parents on a half termly basis and in the annual parent's evenings. The ALNCo works with teaching staff to identify and address any concerns about the progress of ALN pupils across the school.

An assessment of individual need is completed during the referral process and a bespoke package of provision agreed which could include a two week full time Hafan placement, a series of hot spot sessions or could be a long term plan as appropriate. The plan is intentionally flexible in order to meet the needs of individuals effectively. A lead professional is identified at referral stage and they will then become the main point of contact for that child.

An effective behaviour management system is in place (developed in line with the school's behaviour policy) to promote positive behaviour and help children develop their personal management skills within Hafan and Pontio, for an effective transition to mainstream school.

Pupils are referred to Man Meddwl by the pastoral team and Y Ganolfan. The coordinator and the TA maintain a logging and monitoring system and feedback any concerns to the pastoral and leadership team on a weekly basis.

HAFAN

Pupils are referred to Hafan if they are struggling in mainstream lessons and demonstrate challenging behaviours that are difficult to manage in the mainstream setting. These pupils may be withdrawn on a full time basis for a short period time for assessment and will then work with Hafan staff with the aim of a successful return to mainstream lessons. They will continue with their studies when in Hafan and may also focus and do some work on their emotional wellbeing when in Hafan.

Hafan is divided into different zones, which includes a formal classroom set up, a discussion /social area as well as Y Nyth, which may be used if a pupil is particularly stressed or requires some 'time out'.

PONTIO

Pupils are usually referred to Pontio on Transition to Ysgol Aberconwy on discussion with the primary or previous school. Pontio generally supports pupils with communication and social difficulties including ASD. The Pontio registration period provides the small group environment for pupils and gives them the opportunity to plan for the day ahead and to discuss any major changes or concerns at the start of the day.

The Pontio TA supports pupils that may need to leave a lesson for any reason and aims to support pupils in returning successfully as quickly as possible. Some pupils that attend Pontio may have scheduled decompression sessions and may have toolbox sessions during the school day to support them in the mainstream setting.

Pontio is organised into different learning zones including a craft area and there is a sensory room 'Pontio Distaw' for any pupils that may require some time to themselves in an event of a meltdown or anxiety attack. Some sessions are organised by external providers like for example the Paws and Read programme and the Photography course.

Both Pontio and Hafan have a break and lunch club, which offers pupils a safe and familiar place at times where they may experience the greatest difficulties.

MAN MEDDWL

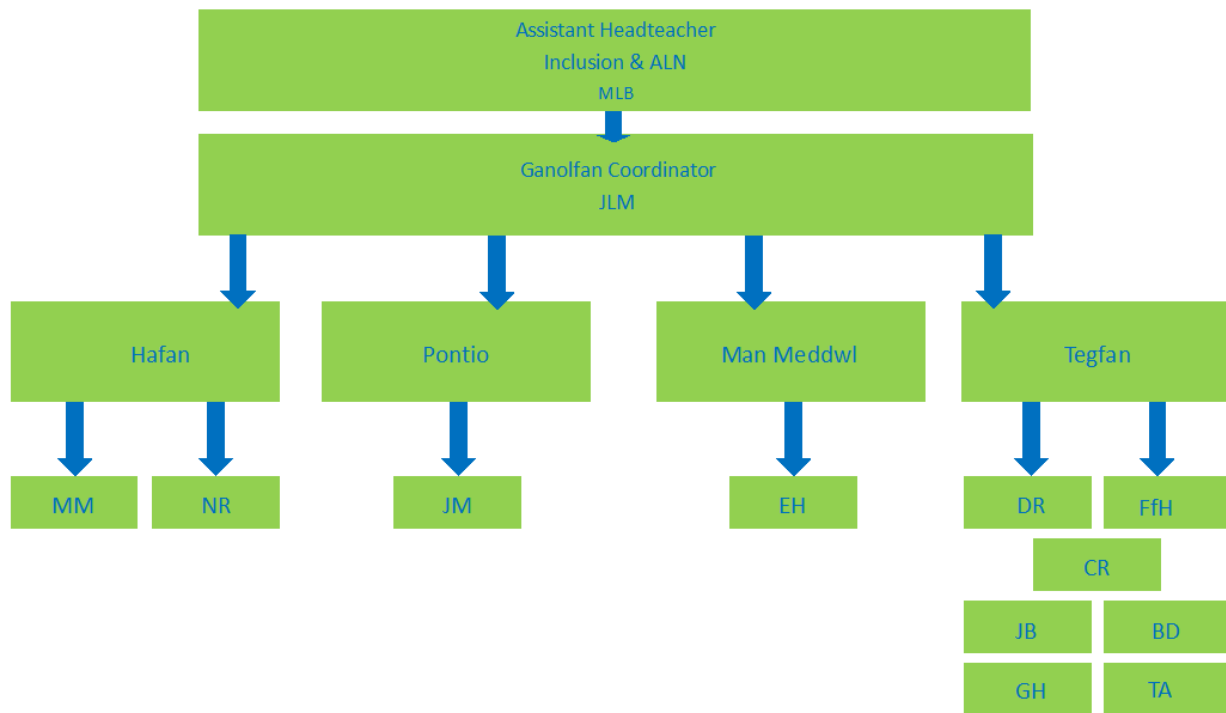
This is an internal exclusion room limited to just four pupils at a time, an alternative to external exclusion, where pupils are removed from mainstream lessons for a short time period, giving them time to reflect on their actions and behaviour. Parents are informed of any referrals to Man Meddwl. All incidents are logged on the pupils' individual behaviour log.

TEGFAN

Tegfan is a new resource base at Ysgol Aberconwy, established to meet the needs of pupils with ASD or neurodevelopmental difficulties that struggle to attend a mainstream setting. Pupil places within the provision are allocated through a moderation process managed by Conwy's education department and spaces are limited to 16 pupils. Tegfan is made up of two classrooms and staffed by experienced and qualified teachers and teaching assistants.

Tegfan is situated in its own separate building at the front of the school and access to it is to the side of the main reception area. Pupils attending Tegfan generally find it extremely difficult to attend mainstream lessons and spend the majority of their time within the provision. A bespoke curriculum is developed to meet the needs of individual pupils within the provision and the teaching staff work closely with Y Ganolfan and specialist departments within the school to ensure the delivery of an effective and engaging curriculum for Tegfan pupils.

STAFFING



The coordinator is responsible for the day to day management of the different areas within Y Ganolfan and will redeploy staff as appropriate to effectively meet the needs of our pupils. The coordinator meets with Y Ganolfan staff regularly to monitor progress and to reinforce a shared ethos in the day to day running of Y Ganolfan. The coordinator takes a lead role in behaviour management, in working with parents and outside agencies, and in the performance management of some Ganolfan support staff.

The teacher in charge of Hafan takes a lead role in planning the curriculum and resources and in coordinating with teaching staff and the ALNCo. They are responsible for the setting, assessment and monitoring of work within Hafan. The Hafan teacher will follow and enforce the school's classroom behaviour policy and refer any particular incidents or concerns to Y Ganolfan Coordinator as necessary.

A team of teachers are timetabled into Hafan to teach specialist subjects. This enables Hafan pupils to maintain links with mainstream teachers and classroom environments, and teachers use the opportunity to build on relationships and to help to improve pupils' engagement with their education.

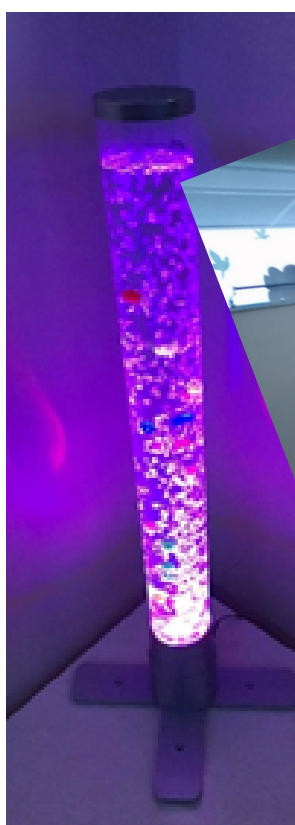
There are two full time teaching assistants working in Hafan and Pontio. They advocate for pupils in mainstream school, form strong links with their families and work extremely hard on a daily basis to support pupils to develop strategies to be able to manage in the mainstream setting and to ensure that they make progress according to their individual targets.

Y Ganolfan documentation which including logs and reviews of individual pupil progress are all stored in office 365, monitored and maintained by the Ganolfan coordinator and shared with the leadership and pastoral teams.

PONTIO



PONTIO DISTAW



HAFAN



Y NYTH



LOCAL AUTHORITY INVOLVEMENT

When Y Ganolfan staff and the school have exhausted all strategies and resources, and a child is still struggling in school, we would at this point look to the local authority for additional support.

This could include Outreach sessions, arranging a Managed move to another school, referral to the Pupil Referral units (PRU), or referral for home tuition. This is done through completion of a referral form, discussion with local authority and consideration by a panel. The moderation panel now meet every two weeks so that pupils can be placed in the most appropriate setting in a timely manner to be able support them most effectively.

The Assistant Headteacher with responsibility for inclusion at Ysgol Aberconwy meets with the LA's Social Inclusion Service Manager on a half termly basis to discuss the progress and concerns around any pupils that are struggling or are challenging in school. This ensures that SIS Manager is aware and involved in the planning of provision for our pupils in advance of any referral to the Local Authority.

When a referral is made to the local authority, all documentation including behaviour logs, PSP's, IBP's, Pupil Profiles and any ALN documents need to be attached to the referral.